

# MISP DASHBOARD

REAL-TIME OVERVIEW OF THREAT INTELLIGENCE FROM

CIRCL / TEAM MISP PROJECT

INFO@CIRCL.LU

APRIL 15, 2024



2024-04-15

MISP Dashboard

MISP DASHBOARD

REAL-TIME OVERVIEW OF THREAT INTELLIGENCE FROM

CIRCL / TEAM MISP PROJECT

INFO@CIRCL.LU

APRIL 15, 2024



# MISP ZERO MQ

MISP includes a flexible publish-subscribe model to allow real-time integration of the MISP activities:

- Event publication
- Attribute creation or removal
- Sighting
- User login

→ Operates at global level in MISP

2024-04-15

MISP Dashboard  
└─ MISP ZeroMQ

└─ MISP ZeroMQ

MISP includes a flexible publish-subscribe model to allow real-time integration of the MISP activities:

- Event publication
- Attribute creation or removal
- Sighting
- User login

→ Operates at global level in MISP

MISP ZeroMQ functionality can be used for various model of integration or to extend MISP functionalities:

- Real-time search of indicators into a SIEM<sup>1</sup>
- Dashboard activities
- Logging mechanisms
- Continuous indexing
- Custom software or scripting

<sup>1</sup>Security Information & Event Management

# MISP-DASHBOARD: AN INTRODUCTION

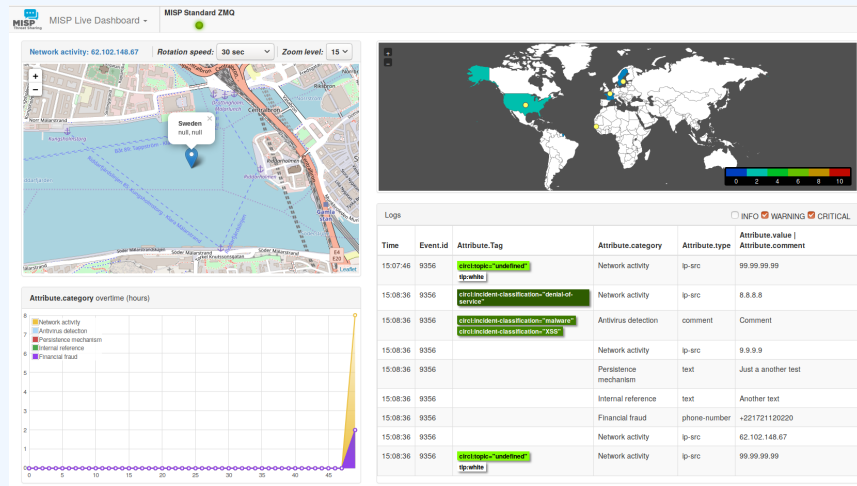
2024-04-15

MISP Dashboard

└─ MISP-Dashboard: An introduction

MISP-DASHBOARD: AN INTRODUCTION

# MISP-DASHBOARD - REALTIME ACTIVITIES AND THREAT INTELLIGENCE

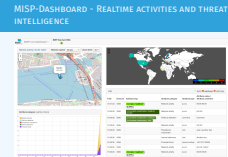


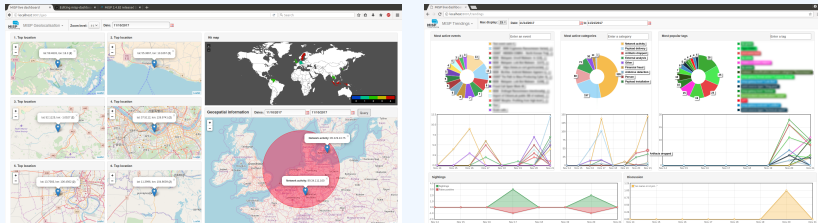
## MISP Dashboard

└ MISP-Dashboard: An introduction

└ MISP-Dashboard - Realtime activities and threat intelligence

2024-04-15





- Subscribe to multiple **ZMQ** MISP instances
- Provides historical geolocalised information
- Present an experimental **Gamification of the platform**
- Shows when and how MISP is used
- Provides real time information showing current threats and activity

2024-04-15

## MISP Dashboard

└ MISP-Dashboard: An introduction

└ MISP-Dashboard - Features



- Subscribe to multiple **ZMQ** MISP instances
- Provides historical geolocalised information
- Present an experimental **Gamification of the platform**
- Shows when and how MISP is used
- Provides real time information showing current threats and activity

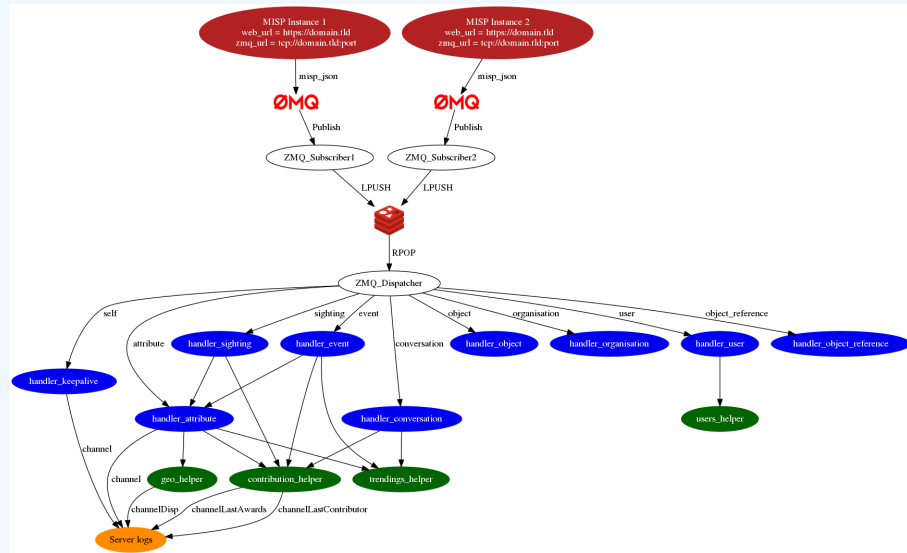
# MISP-DASHBOARD: ARCHITECTURE AND DEVELOPMENT



1. Be sure to have a running redis server: e.g.
  - ▶ `redis-server -p 6250`
2. Update your configuration in `config.cfg`
3. Activate your virtualenv:
  - ▶ `./DASHENV/bin/activate`
4. Listen to the MISP feed by starting the `zmq_subscriber`:
  - ▶ `./zmq_subscriber.py`
5. Start the dispatcher to process received messages:
  - ▶ `./zmq_dispatcher.py`
6. Start the Flask server:
  - ▶ `./server.py`
7. Access the interface at `http://localhost:8001/`

1. Be sure to have a running redis server: e.g.
  - ▶ `redis-server -p 6250`
2. Update your configuration in `config.cfg`
3. Activate your virtualenv:
  - ▶ `./DASHENV/bin/activate`
4. Listen to the MISP feed by starting the `zmq_subscriber`:
  - ▶ `./zmq_subscriber.py`
5. Start the dispatcher to process received messages:
  - ▶ `./zmq_dispatcher.py`
6. Start the Flask server:
  - ▶ `./server.py`
7. Access the interface at `http://localhost:8001/`

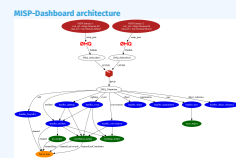
# MISP-Dashboard architecture



# MISP Dashboard

## MISP-Dashboard: Architecture and development

2024-04-15



```
1 # Register your handler
2 dico_action = {
3     "misp_json":          handler_dispatcher,
4     "misp_json_event":   handler_event,
5     "misp_json_self":    handler_keepalive,
6     "misp_json_attribute": handler_attribute,
7     "misp_json_object":  handler_object,
8     "misp_json_sighting": YOUR_CUSTOM_SIGHTINGS_HANDLER,
9     "misp_json_organisation": handler_log,
10    "misp_json_user":     handler_user,
11    "misp_json_conversation": handler_conversation,
12    "misp_json_object_reference": handler_log,
13 }
14
```

```
1 # Register your handler
2 dico_action = {
3     "misp_json":          handler_dispatcher,
4     "misp_json_event":   handler_event,
5     "misp_json_self":    handler_keepalive,
6     "misp_json_attribute": handler_attribute,
7     "misp_json_object":  handler_object,
8     "misp_json_sighting": YOUR_CUSTOM_SIGHTINGS_HANDLER,
9     "misp_json_organisation": handler_log,
10    "misp_json_user":     handler_user,
11    "misp_json_conversation": handler_conversation,
12    "misp_json_object_reference": handler_log,
13 }
14
```

```
1 # Implement your handler
2
3 # e.g. user handler
4 def handler_user(zmq_name, jsondata):
5     # json action performed by the user
6     action = jsondata['action']
7     # user json data
8     json_user = jsondata['User']
9     # organisation json data
10    json_org = jsondata['Organisation']
11    # organisation name
12    org = json_org['name']
13    # only consider user login
14    if action == 'login':
15        timestamp = time.time()
16        # users_helper is a class to interact with the DB
17        users_helper.add_user_login(timestamp, org)
18
```

```
1 # Implement your handler
2
3 # e.g. user handler
4 def handler_user(zmq_name, jsondata):
5     # json action performed by the user
6     action = jsondata['action']
7     # user json data
8     json_user = jsondata['User']
9     # organisation json data
10    json_org = jsondata['Organisation']
11    # organisation name
12    org = json_org['name']
13    # only consider user login
14    if action == 'login':
15        timestamp = time.time()
16        # users_helper is a class to interact with the DB
17        users_helper.add_user_login(timestamp, org)
18
```

- MISP authentication can now be used in the misp-dashboard
- Improved TLS/SSL support in the default misp-dashboard
- Self-test tool to debug and test ZMQ connectivity

2024-04-15

## MISP Dashboard

└─ MISP-Dashboard: Architecture and development

└─ Recent changes in the misp-dashboard

- MISP authentication can now be used in the misp-dashboard
- Improved TLS/SSL support in the default misp-dashboard
- Self-test tool to debug and test ZMQ connectivity



Optimizing contribution scoring and model to encourage sharing and contributions enrichment



Increasing geolocation coverage



Global filtering capabilities


- Geolocation: Showing wanted attribute or only on specific region

- Trendings: Showing only specified taxonomies



Tighter integration with MISP

- Present in MISP by default
- ACL enabled version

-  Optimizing contribution scoring and model to encourage sharing and contributions enrichment
-  Increasing geolocation coverage
-  Global filtering capabilities
  - Geolocation: Showing wanted attribute or only on specific region
  - Trendings: Showing only specified taxonomies
-  Tighter integration with MISP
  - Present in MISP by default
  - ACL enabled version

MISP-Dashboard can provides realtime information to support security teams, CSIRTs or SOC showing current threats and activity by providing:

- Historical geolocalised information
- Geospatial information from specific regions
- The most active events, categories, tags, attributes, ...

It also propose a prototype of gamification of the platform providing incentive to share and contribute to the community

2024-04-15

MISP Dashboard

└─ MISP-Dashboard: Architecture and development

└─ Conclusion

MISP-Dashboard can provides realtime information to support security teams, CSIRTs or SOC showing current threats and activity by providing:

- Historical geolocalised information
- Geospatial information from specific regions
- The most active events, categories, tags, attributes, ...

It also propose a prototype of gamification of the platform providing incentive to share and contribute to the community